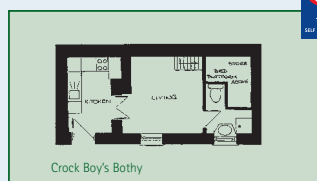
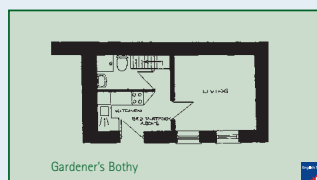


Self catering holidays in the Lake District on a private 300 acre estate

Accommodation in each Bothy is as follows:

- Living-room with dining area
- Under-eaves sleeping area with a low level double bed, reached via stairs (limited headroom).
- Separate kitchen
- Shower room with W.C. and hand basin.



Gardener's Bothies

Our converted Gardener's Bothies are ideal for two people. Cosy and well appointed, they share their own private garden and have parking nearby for one car per bothy.

We regret that no animals are permitted in the Bothies.



The Dairy

Unique accommodation, ideal for two people. The original building, which is Listed, was built at the same time as the Hall during the first half of the 19th Century. The Dairy is situated in a sheltered site away from the main buildings and has an adjacent parking space.

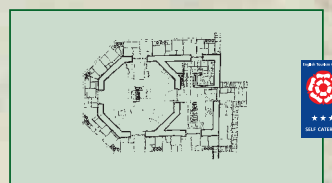
Access to the bedroom, which contains a double bed, is via a ladder set between the kitchen and shower room. Although small, this bedroom is another attractive feature of the building

Accommodation is as follows:

- Living-room with dining area
- One snug bedroom with a low level bed (limited headroom)
- Separate kitchen
- Shower room with W.C. and hand basin

There is a double settee situated in the living room. This is provided as an alternative to the upstairs bedroom. Occupation by more than two people is not permitted.

We regret that no animals are permitted in the Dairy.



Accommodation is as follows

- Living-room with Dining area
- Three Bedrooms
- Separate kitchen
- Bathroom with bath, shower & W.C.

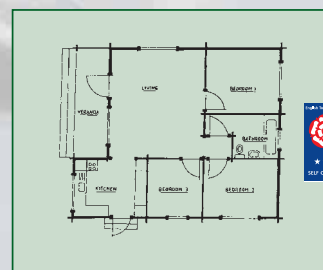


Lodges

Three pine Lodges have been constructed to a high standard to provide comfortable all-year holiday accommodation for up to six people. The Lodges are situated on a sheltered site, with ample space for children to play and for your own barbeque. Central parking is available for up to two cars per Lodge, within metres of the Lodges themselves.

The bedrooms are 4'6" double, 3' twin and 3' bunkroom, each with their own wardrobe and table.

We regret that no animals are permitted in the Lodges.



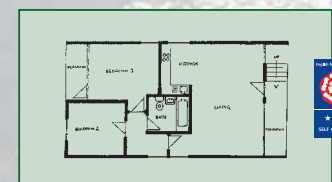
Chalets

Each of our Chalets is purpose built to provide comfortable family holiday accommodation. Each Chalet accommodates up to four people. The Chalets are situated on a sheltered site, with ample space for children to play, and for your own barbeque. Central parking is available for up to two cars per Chalet within metres of the Chalets themselves.

We regret that no animals are permitted.

Accommodation is as follows

- Living-room/Kitchen
- Double bedroom
- Second bedroom with twin beds
- Bathroom with bath, shower & W.C.

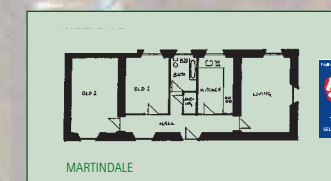


Bannerdale Coach House

- Living-room with dining area & opening to kitchen
- Two bedrooms
- Bathroom with bath, shower & W.C.

Boardale & Martindale Coach Houses

- Living room with dining area
- Separate kitchen
- Two bedrooms
- Bathroom with bath, shower & W.C.
- Martindale has recently undergone improvements to increase accessibility



Parkside Cottages

Our two stone-built cottages (Nos. 1 and 2 Parkside) are situated on the southern side of Patterdale Hall Estate, in an attractive, slightly elevated position, near the lower end of Grisedale. Both cottages afford excellent views, and the benefit of a quiet, secluded site. Each has its own garden, and parking is available for up to two cars per cottage.

The first bedroom contains a double bed, the second contains two single beds, and the third contains a two-tier bunk.

There is an open fire in the living room, for which solid fuel can be purchased at the local garage.

Coach House Mews

Our 19th Century Listed stable block adjacent to Patterdale Hall has been converted into three roomy, comfortable Coach Houses.

Two of the Coach Houses are on the first floor, above what was once the coach-houses and tack-room; the third is on the ground floor. Built on a sloping bank, all three properties therefore have splendid views of the wooded gardens on the Estate and the hills which form its background. Parking is available close by.

In each Coach House, the first bedroom contains a double bed, and the second bedroom two single beds. Each Coach House also has two single folding beds.

Animals are permitted by arrangement in Bannerdale and Martindale, for which a returnable £20 housekeeping deposit is levied.

All 3 properties accept 4 - 6 people.

Downstairs

- Living-room with dining area
- Kitchen
- Utility-room
- W.C.

Upstairs

- Three bedrooms for up to 6 people
- Bathroom with bath, shower & W.C.

